

Notice to Mariners

Geophysical Survey

Overview

Thistle Wind Partners are developing the proposed Cluaran Ear-Thuath (NE2) Offshore Wind Farm.

Please be advised that G-TEC, on behalf of Thistle Wind Partners (TWP), will be undertaking a Geophysical survey of the proposed Cluaran Ear-Thuath (NE2) Offshore Wind Farm lease option area. The purpose of this Notice to Mariners (NtM) is to outline the working area for the survey vessel, as well as the scope of work. The survey will utilise the R/V Mainport Geo (offshore vessel)

An overview of the survey area is shown below in Figure 1, with survey area coordinates provided in Table 1.

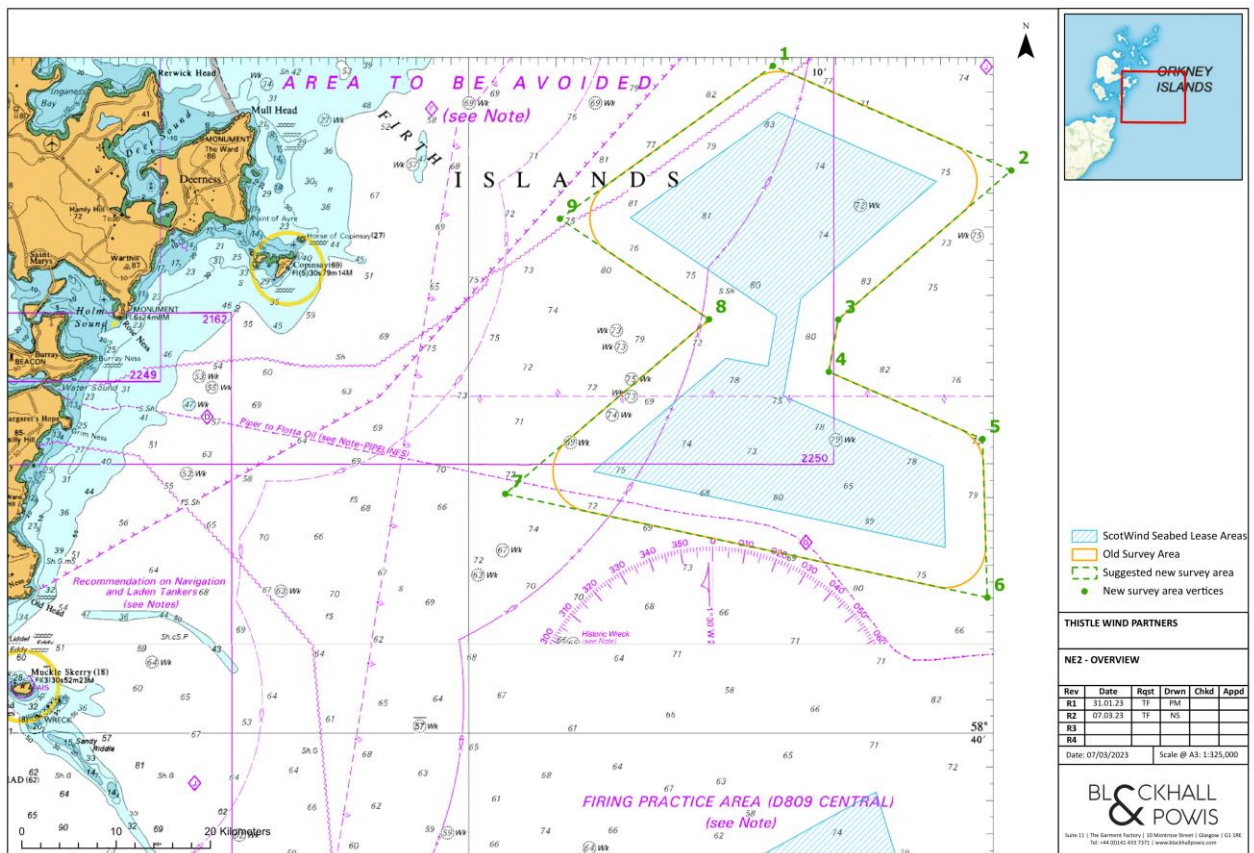


Figure 1: Cluaran Ear-Thuath (NE2) Geophysical Survey Area

Tabulated Coordinates of Area of Operations – Above Chart refers

REF POINTS	WGS84		UTM30	
	LONGITUDE	LATITUDE	EASTING	NORTHING
1	2°12'36" W	58°59'46" N	545390	6539878
2	1°58'58" W	58°56'41" N	558532	6534330
3	2°8'52" W	58°52'16" N	549144	6526014
4	2°9'24" W	58°50'43" N	548664	6523138
5	2°0'37" W	58°48'44" N	557176	6519559
6	2°0'20" W	58°44'2" N	557567	6510836
7	2°27'54" W	58°44'2" N	530921	6516240
8	2°16'15" W	58°52'17" N	542044	6525947
9	2°24'47" W	58°55'15" N	533799	6531381

Schedule of Operations

The schedule of the planned Geophysical survey is shown below in the table below.

Survey Dates	Operation	Vessel(s)
20/03/23 - 11/07/23	Geophysical Survey	Mainport Geo

Vessel and Equipment Details

The vessel that will carry out the survey activities is shown below.



Figure 2: RV Mainport Geo. Image: © Irish Mainport Holdings

Survey Description

G-Tec will be conducting a Geophysical survey over the Cluaran Ear-Thuath (NE2) development area utilising towed sensors. During the survey the Mainport Geo will be operating at approximately 4 knots with equipment being towed at a distance of up to 300 m astern of the vessel.

NtM Ref No. NtM-TWP-NE2-001
Date of Issue: 07.03.23

Page 4 of 4

General Safety Advice

The vessel will be restricted in their ability to manoeuvre and will display the appropriate lights and shapes prescribed by the International Regulations for Preventing Collisions at Sea. Other vessels are requested to provide a minimum clearance of 500 m from the survey vessel during marine operations, and pass at a safe speed. A Fisheries Liaison Officer will be onboard the vessel for the duration of the survey. Regular Securite Messages will be issued on VHF Channel 16 and this Channel will be monitored by the vessel at all times. The vessel will also transmit regular Automatic Transmission System (AIS) Messages.

Vessel Contact Details

The vessel contact details are given below:

Vessel Name: R/V Mainport Geo	
IMO:	9723667
Call sign:	V7A4270
Bridge telephone:	+352 21 2028177
Bridge email:	mainportgeo@mainport.ie
Party Chief telephone:	+32 495 18 47 93 +352 691 510 560
Part Chief email:	partychief@g-tec.eu
Onshore Site Manager email:	Deprez.romain@g-tec.eu

Onshore Based Fisheries Liaison Support

Onshore Fisheries liaison for the duration of the survey will be coordinated by Blackhall & Powis Ltd. For any commercial fishery queries please contact the Company Fishing Liaison Officers (CFLOs):

Contact Name:	Tommy Finn
Telephone:	07787 503119
Email:	tommy.finn@blackhallpowis.com

Contact Name:	Michael J. Sutherland
Telephone:	07928 484343
Email:	michael.sutherland@blackhallpowis.com